

# MONTHLY MEMBERSHIP PROGRESS REPORT

LOCATION MANITOBA

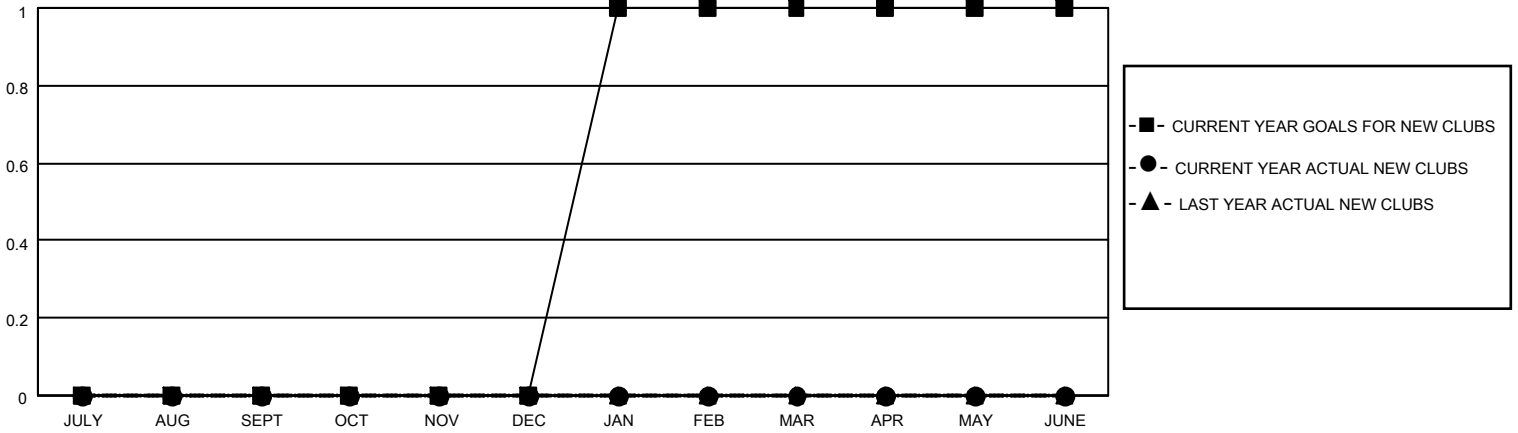
District 5M 13

Results as of: 6/30/2021

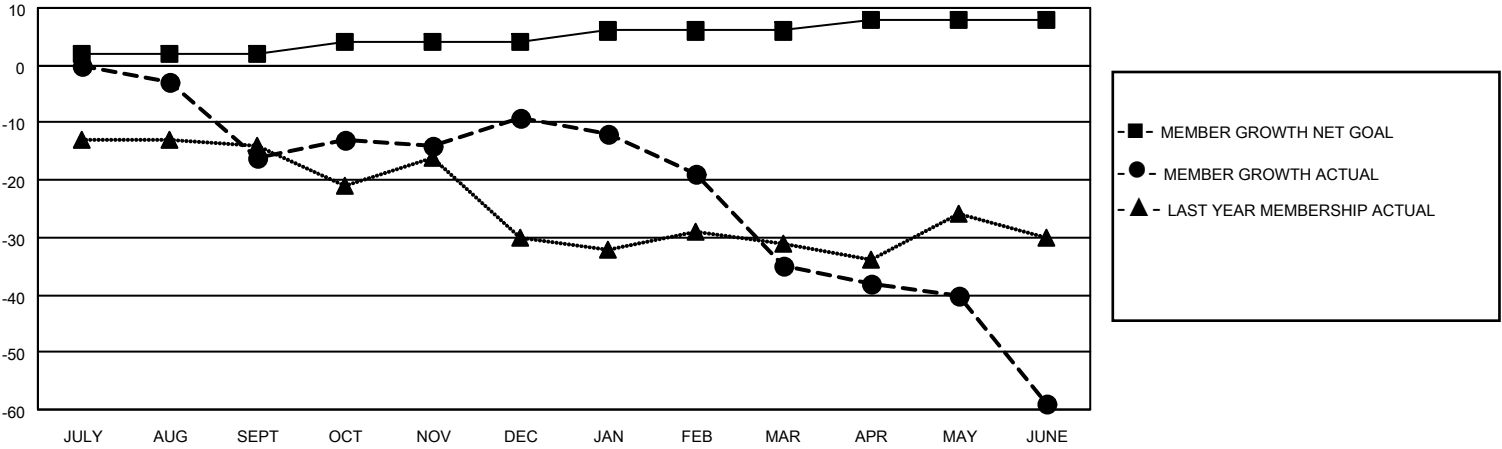
Clubs			
RESULTS FOR 2020-2021			
QUARTER	NEW CLUB GOAL	NEW CLUBS	DROPPED CLUBS
JULY/AUG/SEPT	0	0	0
OCT/NOV/DEC	0	0	0
JAN/FEB/MAR	1	0	1
APR/MAY/JUNE	0	0	0

Members			
RESULTS FOR 2020-2021			
QUARTER	MEMBER GROWTH NET GOAL	MEMBER GROWTH ACTUAL	DROPPED MEMBERS ACTUAL (including transfers)
JULY/AUG/SEPT	2	5	21
OCT/NOV/DEC	2	39	28
JAN/FEB/MAR	2	3	28
APR/MAY/JUNE	2	22	40

**GOALS AND ACTUAL NEW CLUBS CUMULATIVE**



**GOALS AND ACTUAL MEMBERS CUMULATIVE**



DROPPED CLUBS: 1	17 CLUBS OF 50 ADDED 1 OR MORE NEW MEMBERS	<b>GENDER DISTRIBUTION</b>
<b>DROPPED MEMBERS</b>		MALE            696 (75.32%)
DECEASED            11		FEMALE        228 (24.68%)
CLUB CANCELLED    13	<a href="#">CLICK HERE FOR CUMULATIVE MEMBERSHIP DATA</a>	TOTAL FAMILY UNIT MEMBERS            185
OTHER                 93		FAMILY MEMBERS PAYING HALF DUES            93
<b>TOTAL                    117</b>		